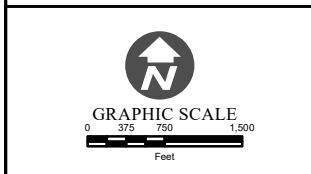
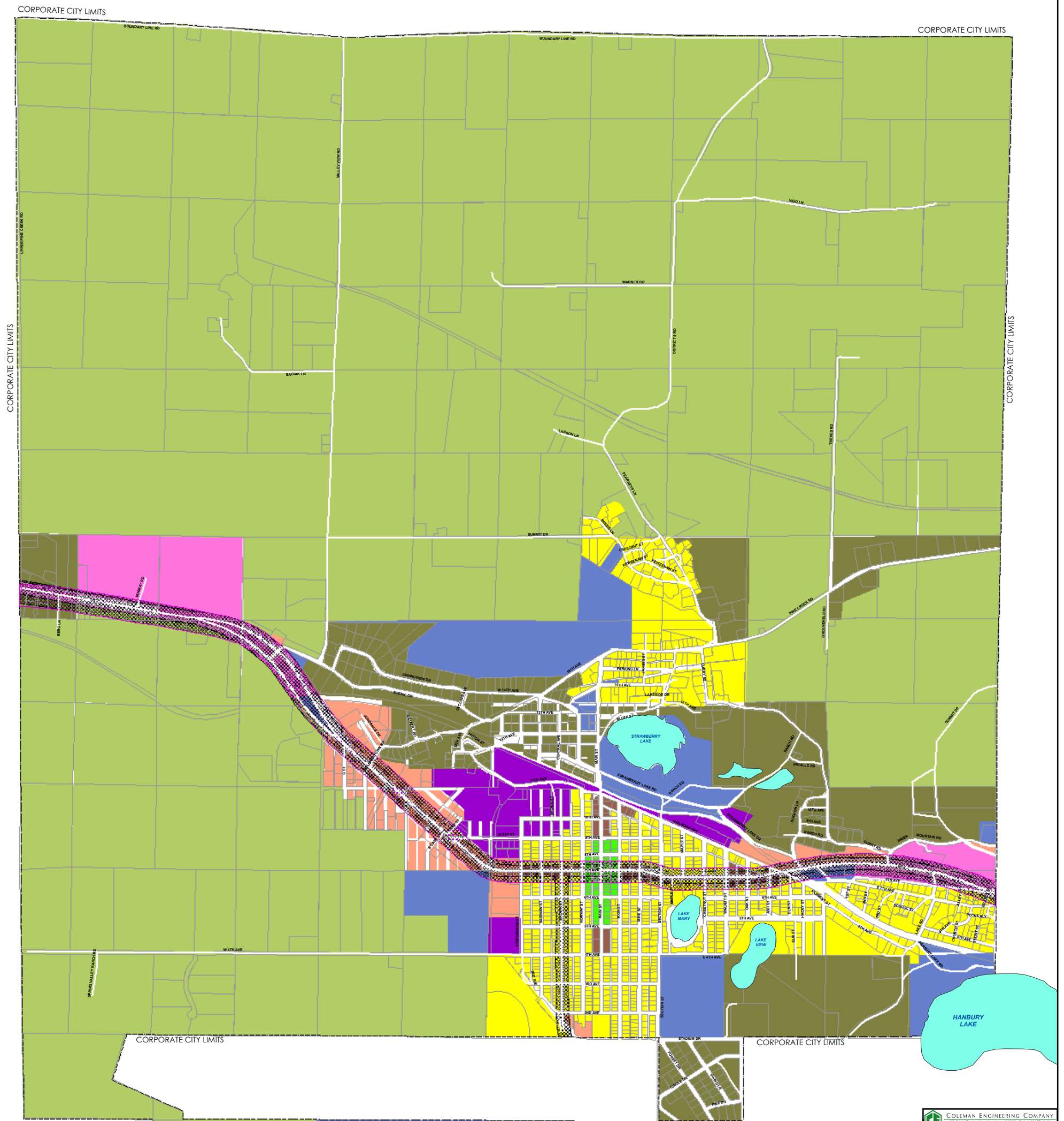


CITY OF NORWAY

OFFICIAL ZONING MAP



LEGEND

- ACCESS MNGT ZONE
- HC-O, HIGHWAY COMMERCIAL OVERLAY
- AGRICULTURAL PROD.
- B-1, BUSINESS ONE
- B-2, BUSINESS TWO
- B-3, BUSINESS THREE
- B-4, BUSINESS FOUR
- I, INDUSTRIAL
- PUBLIC LAND
- R-1, RESIDENTIAL ONE
- R-2, RESIDENTIAL TWO
- R-3, RESIDENTIAL THREE
- RR, RURAL RESIDENTIAL
- TIMBER PRODUCTION

COLEMAN ENGINEERING COMPANY
1011 CHURCH STREET • BOSTON, MASSACHUSETTS 02111 • PHONE: (617) 552-1880
 200 EAST 40TH STREET • BOSTON, MASSACHUSETTS • PHONE: (617) 552-1880

NOTES

- NORWAY AREA ZONING ORDINANCE No. 392

REVISIONS

- INITIAL MAP (3/1/2004)
- REVISION #1 - ACCESS MANAGEMENT OVERLAY ZONE (5/15/2006)
- REVISION #2 - GLOBAL ORDINANCE REVISION (11/3/2010)
- REVISION #3 - NORWAY TOWNSHIP BOARD AND NORWAY CITY COUNCIL ENACTMENT (11/18/2010)
- CUPPAD CHANGES / COLEMAN ENG. CO. UPDATES (2/10/11)
- COLEMAN ENG. CO. UPDATES (10/18/13)
- COLEMAN ENG. CO. UPDATES ZONING CHANGE OF R-1 TO B-3 AT 2ND AVENUE AND USH 8 (10/28/13).
- ADDITION OF AREA ANNEXED BY THE CITY OF NORWAY FROM NORWAY TOWNSHIP. (10/28/13)
- ZONING ADDITION OF B-4, BUSINESS FOUR (8/17/16)
- CHANGE RP-RESOURCE PRODUCTION TO RURAL RESIDENTIAL-RR (5/16/19)

SIGNATURES

Cathy Bowe
 NORWAY CITY MAYOR

Trisha Plant
 ATTEST BY NORWAY CITY CLERK